

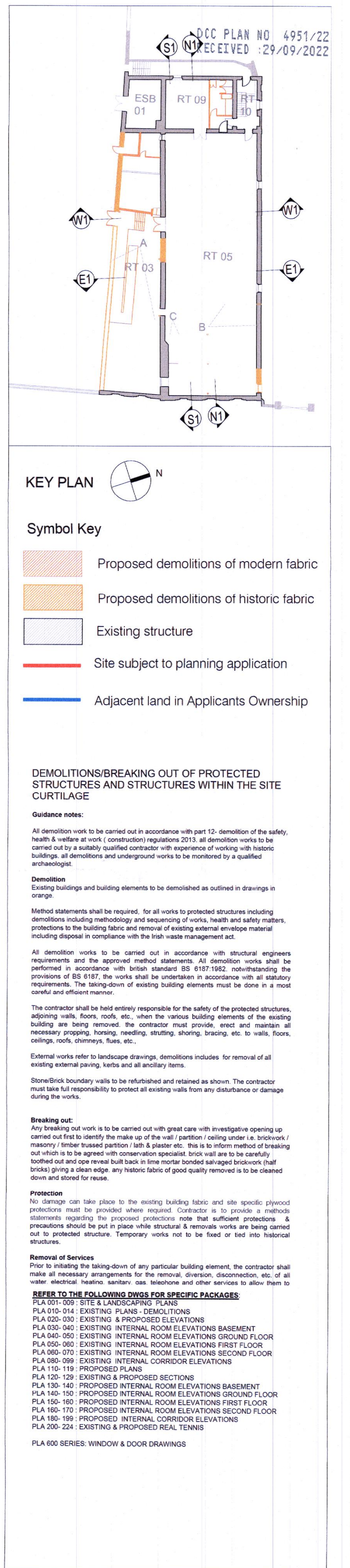
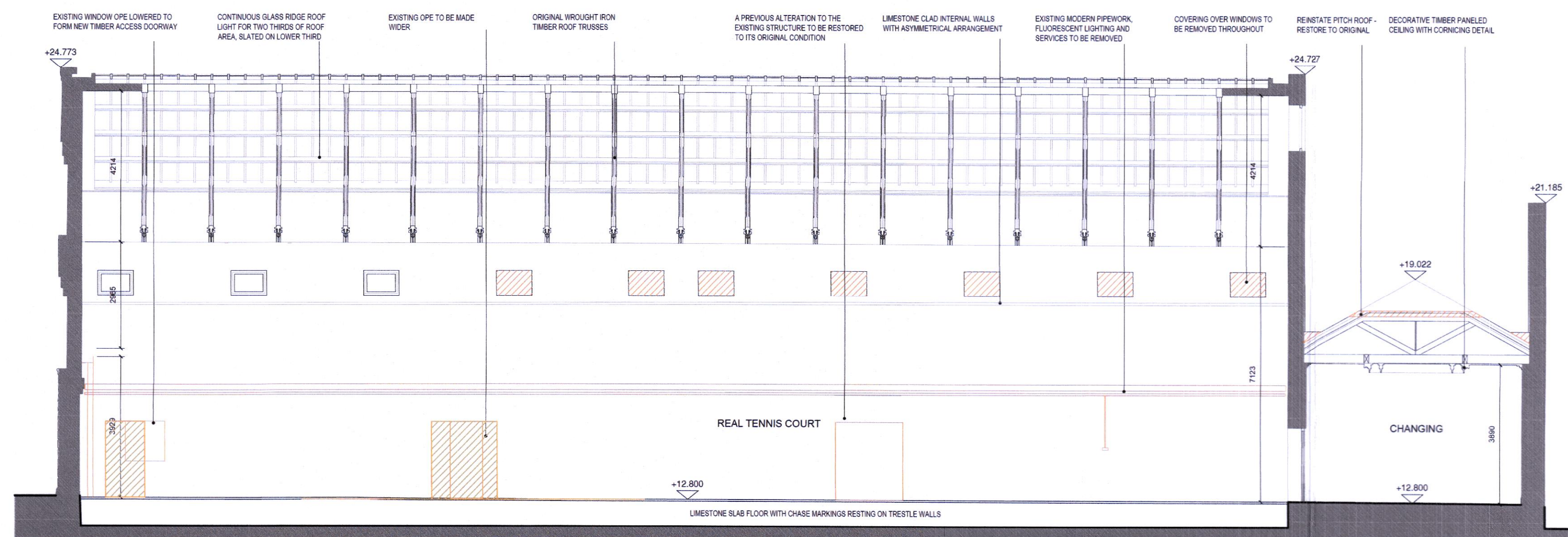
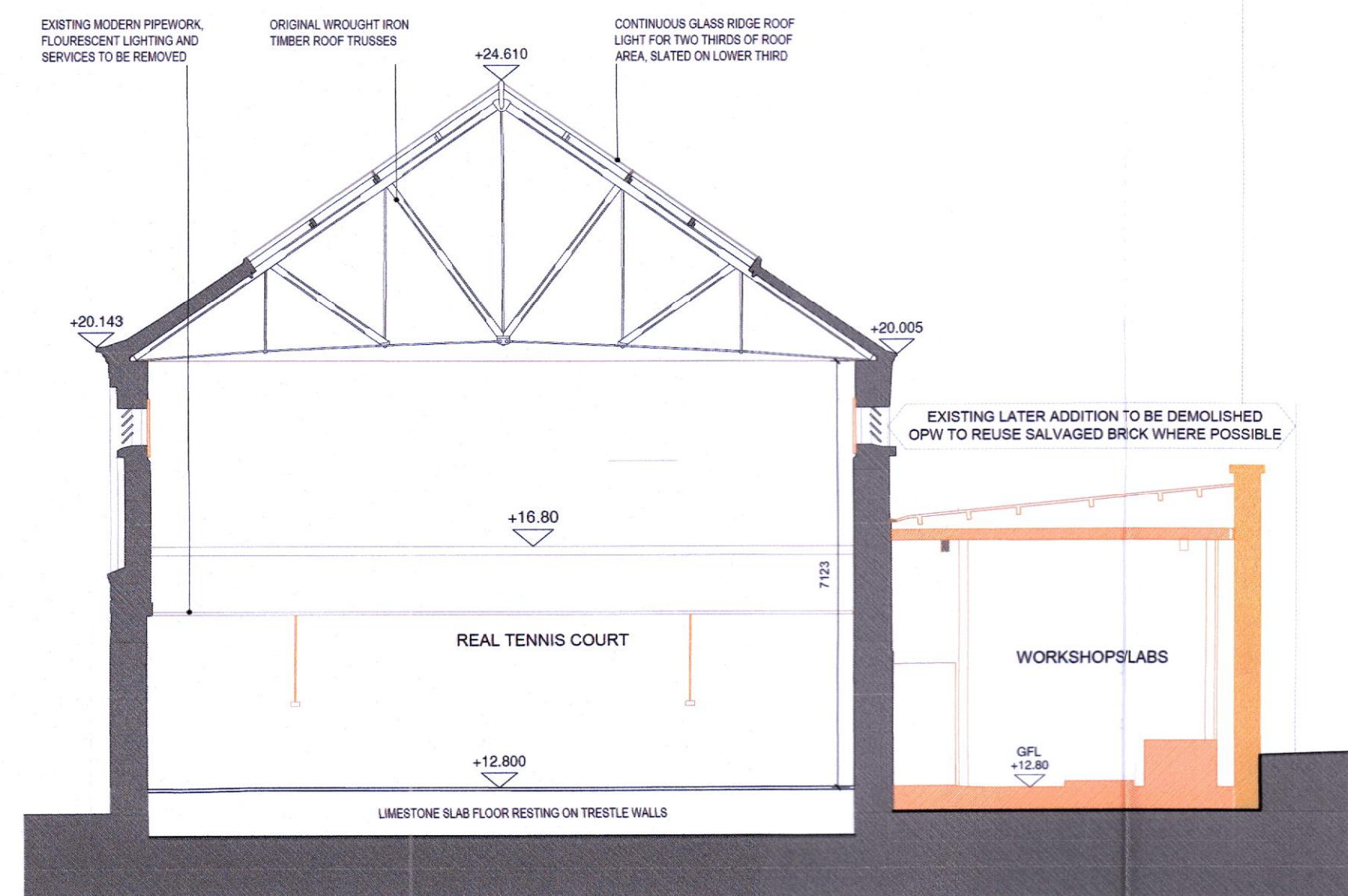
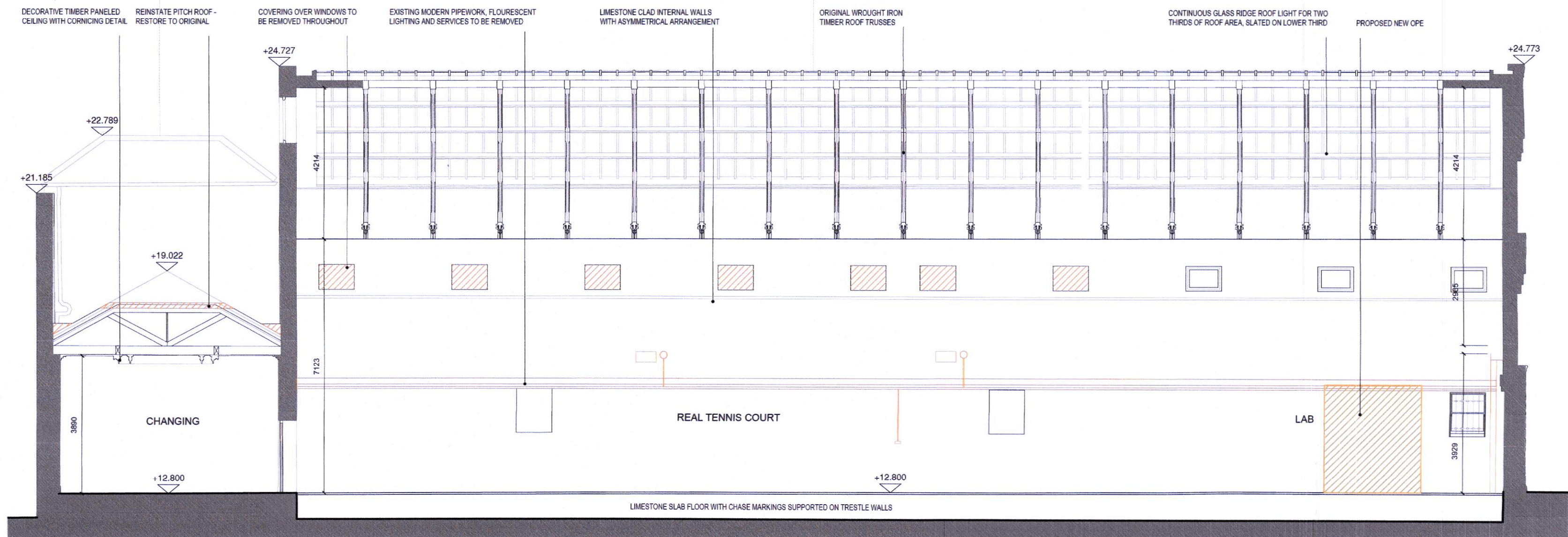
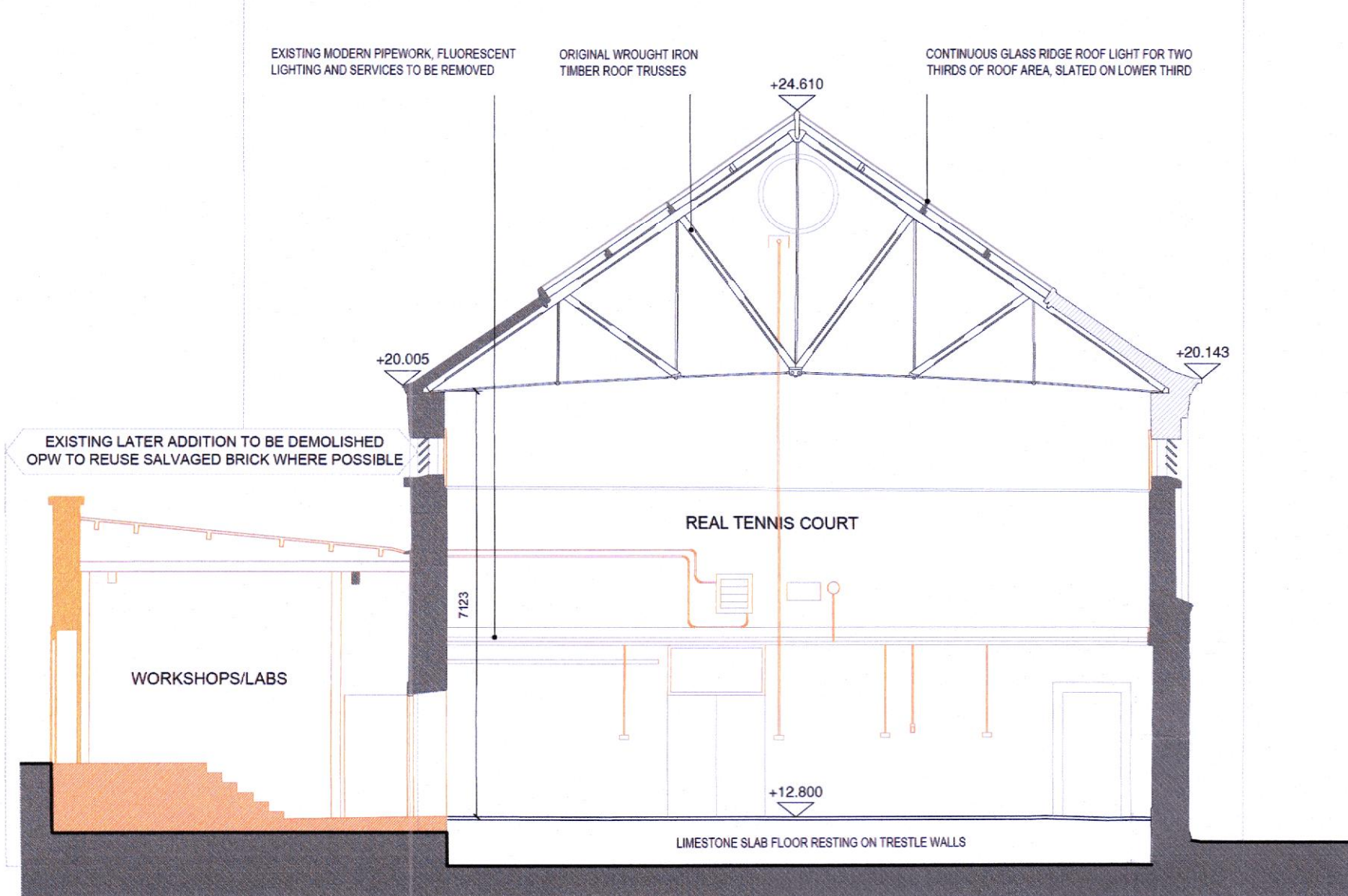
REAL TENNIS HISTORY:

In 1939, Iveagh House, the tennis court and grounds were granted by Rupert Guinness, the second Earl of Iveagh, as a gift to the State. The court was used by University College Dublin primarily as a gymnasium during the 1950's and 1960's and as an examination hall during June and September. In the 1970's it was used as a building laboratory by the School of Architecture and following that by the Civil Engineers Department. Areas of the building were also used for storage of archaeological material during excavations. The building was vacated by UCD in 2007.

The yard to the south was roofed by UCD in the mid 20th Century as a new entrance lobby with ramp and steps. A number of temporary partitions were erected internally. Its construction includes blockwork internal partitions. A steel framework supports the roof, which consists of corrugated metal roof sheeting. The metal roof sheeting and steel supporting structure are exposed. The new entrance area is lit by a number of rooflights from above. Internal finishes include exposed yellow brickwork on the inner leaf of the external wall, exposed blockwork partitions, poured concrete floor (Image B) and a painted nap render to the face of the wall to the courts.

The original entrance room with timber Victorian staircase, windows and associated joinery are still in place but in a poor state of repair. The staircase does not currently lead to an upper level and its original intention and arrangement is not clear. The changing room area to the west is relatively intact with partitions, fittings and decorative timber boarded ceiling.

Internally the Dedans (viewing area at the west end) and Penthouses (sloping roofs on three sides over viewing areas or galleries) associated with the real tennis court have been removed. Limestone clad internal walls with asymmetrical arrangement have been painted and a number of windows boarded up. Limestone slab floor with chase markings are visible. The original court floor markings remain and can be seen along its perimeter. (Image F) Original wrought iron with timber roof trusses are exposed. (Image E) A tambour can be seen on the South East corner of the court, (a buttress like feature on the hazard side of the court off which shots can be played.)



OPW

Offg na
nOibreacha Poiblí
Office of Public Works

Office of Public Works
a: Jonathan Swift Street,
Trim, Co. Meath,
C15 NX36
t: 046 342 2000
w: www.gov.ie/opw

Major Projects

Sarah Woods, Senior Architect M.R.I.A.I
Architects, Patrick Mooney, Sabine Klingner,
Donal Ryan
Graduate Architects, Shane Sugrue, Lily O'Donnell

Drawing Revision:				
Revision	Date	By	Chk'd	Description
rev	xx/xx/xx	aa	aa	Issued for--

Drawing Revision:				
Revision	Date	By	Chk'd	Description

Project Title:
National Children's Science Centre
Earlsfort Terrace
Dublin 2

Drawing Title:
Real Tennis
Existing Sections

Project Role:		OPW Section Project Reference:		Scales at A1:	
Cultural		H.14.003		1:100	
Drawn:	Checked:	Approved:	Date:		
AJ, JOK	SW	SW	20/04/22		
Status Description:		Status:	Revision:		
Planning		PLA	Rev		
Drawing Number:					
202					